



**COUNCIL OF
THE EUROPEAN UNION**

Brussels, 14 May 2012

**Interinstitutional File:
2011/0282 (COD)**

9974/12

LIMITE

**AGRI 316
AGRISTR 64
CODEC 1314**

COVER NOTE

from: General Secretariat
to: Working Party on Agricultural Structures and Rural Development
No Cion doc.: 15425/11 + REV 1 (en, fr, de) - COM(2011) 627 final
Subject: Proposal for a Regulation of the European Parliament and of the Council on support for rural development by the European Agricultural Fund for Rural Development (EAFRD)
- Working Document from the Commission services

Delegations will find attached a Working Document submitted by the Commission services.

CAP-REFORM

Fiche No 22

“Monitoring and Evaluation of the EU's rural development policy: Preliminary ideas for and possible elements of common indicators”

Brussels, 14 May 2012

Commission Proposal	Relevant Article
Horizontal Regulation [COM(2011) 628]	110
EAFRD Regulation [COM(2011) 627/3]	74-86

This paper has been drawn up on the basis of the proposals for regulations adopted by the European Commission on 12 October 2011. It neither prejudices the position which may be taken by the Council and the European Parliament, nor does it anticipate the possible content of any delegated or implementing acts that may be drawn up by the Commission.

Nota Bene:

This paper has been prepared on the basis of the preliminary ideas put forward in the technical background document 'Draft intervention logic for rural development post 2013 and possible common indicators' that was made available at the workshop "Strategic programming and RDP Monitoring and Evaluation" (Brussels, 14-15 March 2012).

Introduction

Article 110 of the proposed Horizontal Regulation provides for a common monitoring and evaluation framework to assess the contribution of the CAP as a whole to the objectives of the EU 2020 strategy and to measure the CAP's performance in relation to its specific objectives, namely: (a) viable food production, with a focus on agricultural income, agricultural productivity and price stability; (b) sustainable management of natural resources and climate action, with a focus on greenhouse gas emissions, biodiversity, soil and water; (c) balanced territorial development, with a focus on rural employment, growth and poverty in rural areas.

The common monitoring and evaluation framework will cover direct payments and market measures (which were not covered by a single monitoring and evaluation framework so far) as well as the EU's rural development policy.

The new framework should build on current experience, and provide for a **simplified** and **more coherent** system covering both pillars of the CAP. The existing distribution of responsibilities between the Commission and Member States is likely to be largely maintained. The new framework will seek to minimise administrative burden by making use of existing indicators and data sources to the extent possible, by limiting the number of indicators and by rationalising the submission and use of data.

While impact indicators will cover both pillars of the CAP, as they are associated with the general CAP objectives, and the majority of context indicators will be relevant to both pillars, output and result indicators will be defined separately for each pillar.

For rural development, work is currently under way on developing a refined common monitoring and evaluation system with the aim (a) to demonstrate the progress and achievements of rural development policy and assess the impact, effectiveness, efficiency and relevance of rural development policy interventions, (b) to contribute to better targeted support for rural development, and (c) to support a common learning process related to monitoring and evaluation. The Commission will establish, by means of an implementing act, a list of common indicators linked to the policy priorities.

After outlining the steps carried out so far in collaboration with Member States and stakeholders in relation to monitoring and evaluation, and discussing some key principles that inform the selection of indicators, this fiche presents a draft intervention logic and possible indicators for the post-2013 rural development policy framework, as presented on occasion of the Joint workshop of the European Network for Rural Development (ENRD) and the European Evaluation Network (EEN) on 15 March.

1. Collaborative work carried out so far

Within the basic regulatory framework as it takes shape, the Commission has begun a long term process of technical collaboration with Member States and stakeholders from an early stage, in order to support a successful implementation of the future monitoring and evaluation system. The main steps of this process (in reverse chronological order) are outlined below:

- 14/15 March 2012: Joint workshop of the European Network for Rural Development (ENRD) and the Evaluation Expert Committee for Rural Development (ExCo) on 2014-2020 Strategic programming and RDP Monitoring and Evaluation. In relation to monitoring and evaluation, the objective was to exchange views on the intervention logic and possible common indicators for monitoring and evaluation and identify the needs of stakeholders in this context (e.g. on data and IT specifications, guidance etc.). The outcomes of this event are described in the workshop newsletter, available at (insert web address).
- 19 January 2012: ExCo meeting: first exchanges with Member States on the conceptual framework and draft intervention logic for monitoring and evaluation of the EU's rural development policy post-2013.
- 8 December 2011: Meeting of the Coordination Committee of the European Network for Rural Development (ENRD) on the necessary activities to help prepare for the new generation of rural development programmes.
- 27 October 2011: ExCo meeting including identification of technical contributions to development of the future system (e.g. guidance documents, evaluation plan contents, definitions of indicators and data sources) and a joint session with the Single Common Market Organisation Management Committee to consider issues and areas where complementary/common monitoring and evaluation activities could be envisaged across both pillars of the CAP.
- 20/21 September 2011: Stakeholder conference on “Monitoring and Evaluation of the CAP post-2013”, which had several specific aims: to build a shared understanding around the requirements and expectations for the monitoring and evaluation of the CAP post-2013, to explore the elements and tools needed in order to meet these expectations and to establish a basis for further work on developing a monitoring and evaluation system which responds to the needs of all stakeholders.

2. Discussion on the draft list of indicators for the EU's rural development policy

2.1. Impact indicators (see annex II)

It is foreseen that one set of impact indicators will be developed covering the CAP as a whole to include its contribution to EU2020 objectives, since impacts occur due to the combined effect of a range of actions across both pillars of the CAP. Areas on which rural development policy would be expected to have a specific impact were identified and incorporated in the proposed list of impact indicators for the CAP as a whole, shown in Annex III. The current CMEF includes 7 impact indicators covering economic, environmental and social aspects of the policy, and continuity with these is being sought as far as possible. As far as possible, the impact indicators now proposed draw on regularly collected statistics already available from existing sources and therefore would impose no additional administrative burden (e.g. agricultural income).

Given that some impact indicators, particularly the environmental ones, have proved challenging for Managing Authorities, further work will be carried out to establish appropriate definitions and methodologies, in order to support authorities and evaluators in obtaining the necessary information, whilst minimising any additional burden.

2.2. Result indicators (see annex III)

Result indicators are linked to priorities and focus areas. Information from operation applications, together with standard formulae, can be used to calculate expected result values. The proposal discussed with the Member States during the March workshops included 23 result indicators, and therefore represents a slight increase compared to the current situation in the CMEF, which contains 16. This increase is largely accounted for by the need to have one indicator which can be used to establish quantified targets for each of the focus areas within rural development policy. However, the intention is as far as possible to use indicators that are simple and easy to calculate, using information readily available in order to minimise the additional administrative burden.

For each focus area, one indicator has been identified that could potentially be used as a "target indicator" to establish an ex-ante quantified target at RDP level (these are shown in bold in the diagrams in section 3). For target indicators in particular, it is important to select indicators that can be simply and regularly monitored, minimising the data requirements for beneficiaries and administrations: therefore, wherever possible, well established indicators and methods should be used.

2.3. Output indicators (see annex IV)

The proposed approach defines a set of operation level data to be collected by Managing Authorities at RDP level, and proposes a single database approach, which would substantially increase reporting flexibility, whilst keeping data collection and input as simple as possible and ensuring an outcome-oriented policy approach.

Output indicators are linked to measures and individual applications for operations. They are simple physical or financial measures, and the data is captured directly from applications. The RDPs will include an indicator plan, including planned outputs (such as number of operations under specific measures or sub-measures, or of particular types), demonstrating how the financial resources will be used to implement the strategy and support the achievement of the programme objectives and targets.

In line with the goals of simplification and minimising the administrative burden on managing authorities and beneficiaries, the number of output indicators proposed has been kept to a minimum. The data table in Annex II indicates the likely source of the information for each item, so that the burden on beneficiaries and Managing Authorities can be considered, and to show that where possible existing sources of information (e.g. IACS) would be used, to further reduce both the administrative burden and the scope for error.

The IT database, where relevant information would be captured electronically by Paying Agencies/Managing Authorities when processing/approving applications, would allow the Managing Authorities to compile aggregated data for the output indicators in relation to approved and completed projects, according to the templates to be specified for the Annual Implementation Reports.

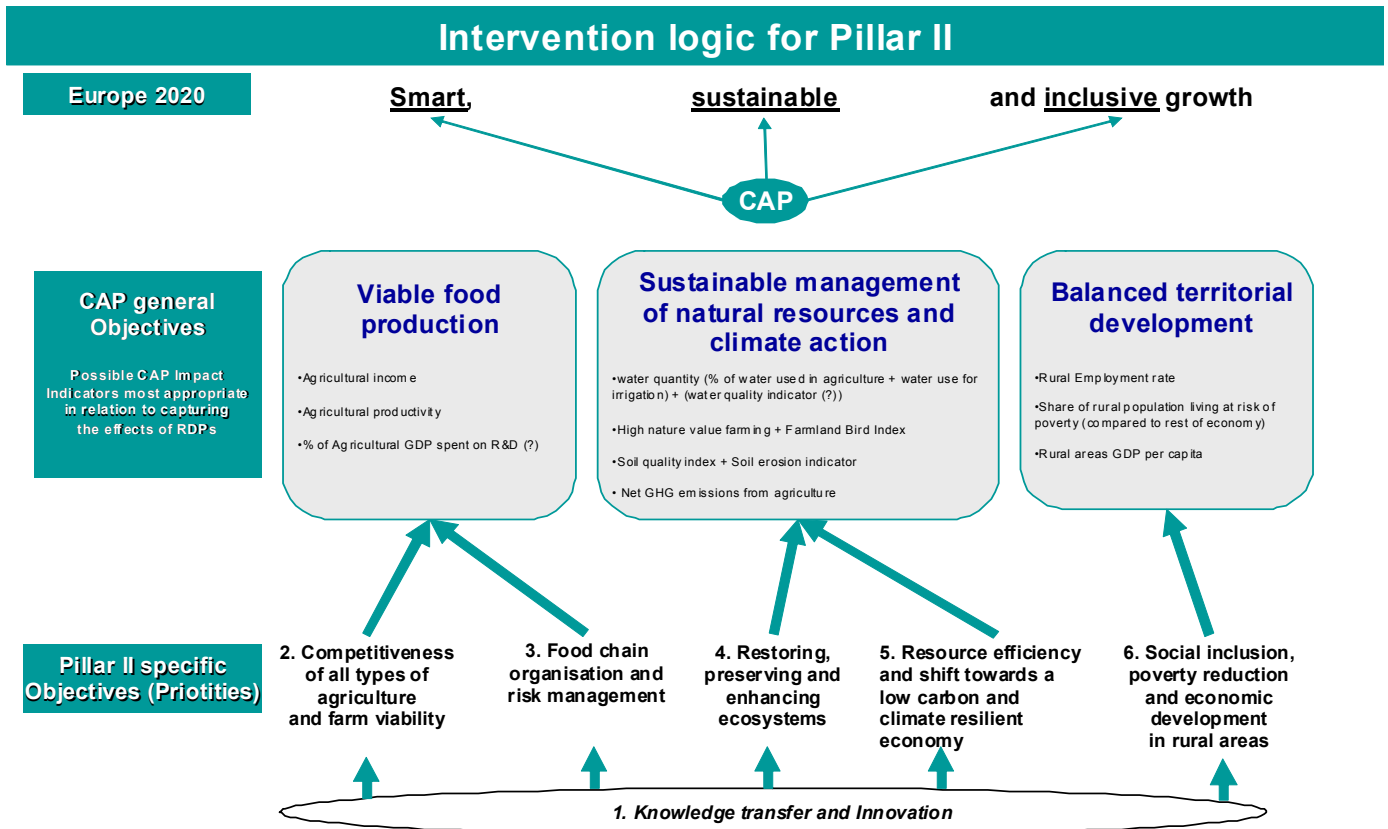
2.4. Context indicators

In addition to the indicators so far described, a set of context indicators will also be needed. These will be used to describe the initial situation of the RDP territory, and will form an important input for the SWOT analysis of the area, which will shape the programme strategy and specific intervention logic. For the most part, these indicators will be drawn from existing data, and will therefore not impose an additional administrative burden on Member States. Many are likely to be retained from those used in the current programming period.

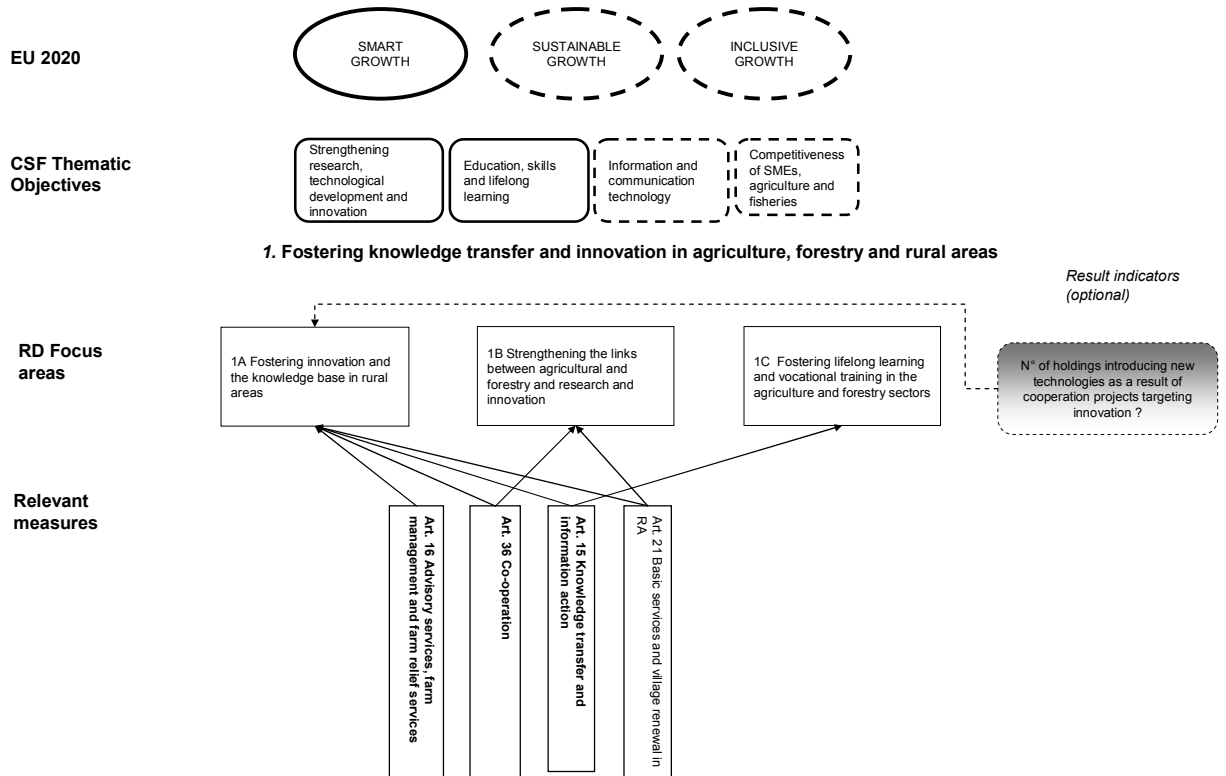
3. Draft intervention logic and possible associated indicators

Introduction: Overall intervention logic for Pillar II and impact indicators

This first overall intervention logic diagram shows the links between rural development priorities, the CAP general objectives and the three EU2020 objectives. It is at the level of the CAP objectives that impact indicators should be considered.



3.1. Priority 1: Fostering knowledge transfer and innovation in agriculture, forestry and rural areas



Specific aspects of Priority 1 intervention logic:

Three of the measures specifically related to Priority 1 (Article 15 "Knowledge transfer and information actions", Article 16 "Advisory services", and Article 36 "Cooperation"), are shown in the intervention logic for all priorities, as it is considered that their use would make a direct contribution to every priority. Priority 1 *per se* simply reflects the aggregate outcomes of these measures, whose results appear primarily in relation to the other priorities (e.g. advisory services related to pollution control would make a direct contribution to Priority 4 "Restoring, preserving and enhancing ecosystems dependent on agriculture and forestry", whilst a cooperation project bringing together producers with local processors and institutional food purchasers such as local administrations, hospitals and schools would contribute directly to Priority 3 "Promoting food chain organisation and risk management in agriculture").

Nevertheless, a separate intervention logic for Priority 1 could be considered, as shown here, demonstrating the relationship between this priority, the EU2020 and CSF objectives, and the specific measures designed to implement it.

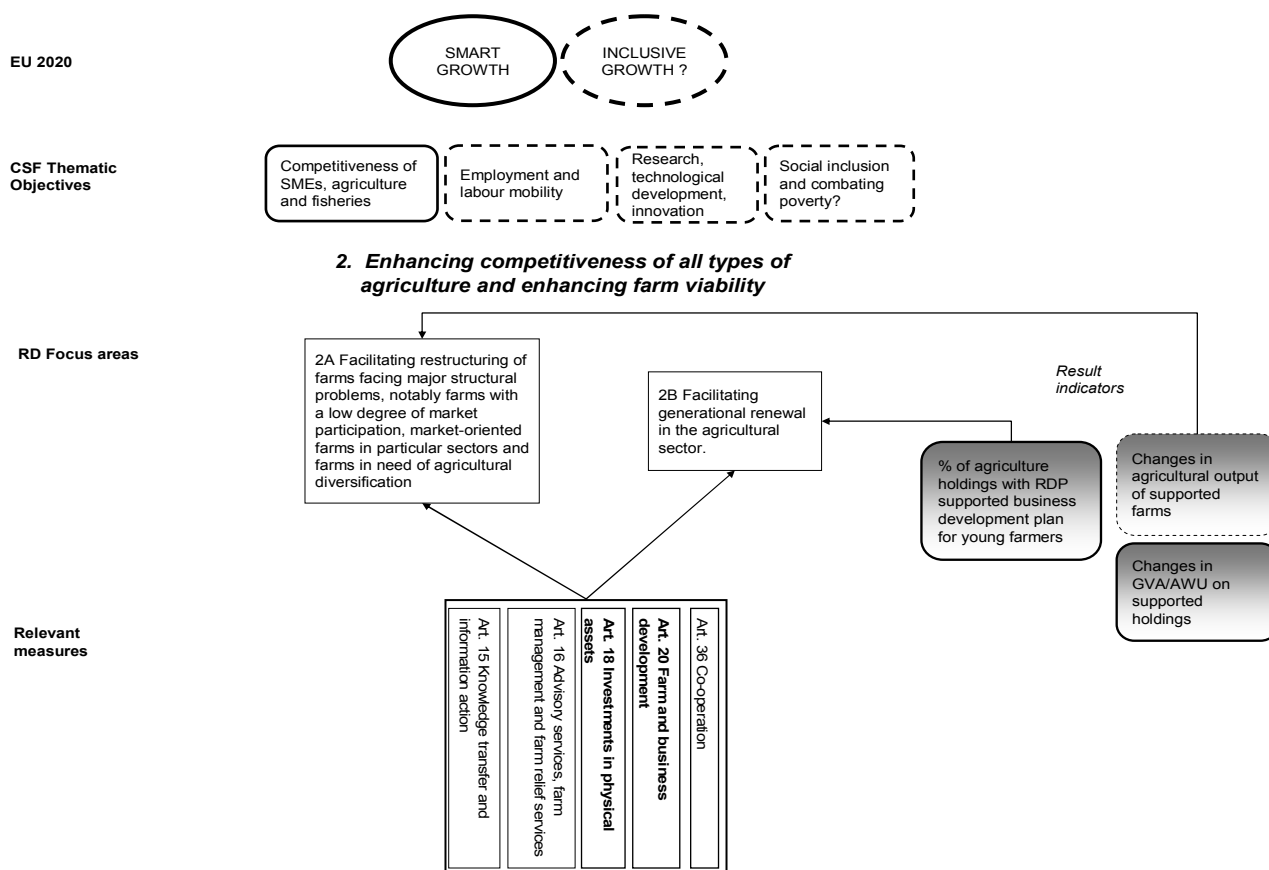
Links to EU 2020 objectives, CAP general objectives and CSF thematic objectives:

- As this priority has a horizontal dimension, all three EU 2020 objectives, and all three CAP general objectives are relevant.
- The CSF thematic objectives to which this priority is considered as being linked less directly (outlined with dotted lines) could be subject to further consideration.

Remarks on result indicators for the priority:

Whether specific result/target indicator(s) are necessary for this priority is still to be decided. The contribution of Priority 1 activities should be captured at result level through the indicators for the other priorities. A strong argument in favour of not predefining a specific result indicator for Priority 1 is that this would necessarily prejudge the type of activities/results emerging, whereas the objective is to leave the scope as open as possible to accommodate truly innovative projects. However, some specific result indicators could be engineered (see example provided in the diagram). Targets for this priority could be established using output indicators instead of result indicators. In conjunction with the proposed approach to output indicators, this would also allow identification of the expenditure, type and number of operations under this priority linked to each of the thematic priorities. This would both provide visibility and contribute to simplification by avoiding potential duplication with the results of other priorities.

3.2. Priority 2: Enhancing competitiveness of all types of agriculture and enhancing farm viability



Links to EU 2020 objectives, CAP general objectives and CSF thematic objectives:

- The main EU2020 objective to which this priority contributes is smart growth. Inclusive growth is also relevant because this priority aims to improve the competitiveness of an economic sector whose incomes lag behind the average. This priority is broad, and is likely to encompass a large number of varied operations and beneficiaries, so it is appropriate to include links to the two objectives. However, improved competitiveness is often achieved through substituting capital for labour, reducing employment levels. It was therefore decided to focus on smart growth, with inclusive growth identified as a secondary effect.
- It is related most closely to the first general CAP objective (competitiveness).

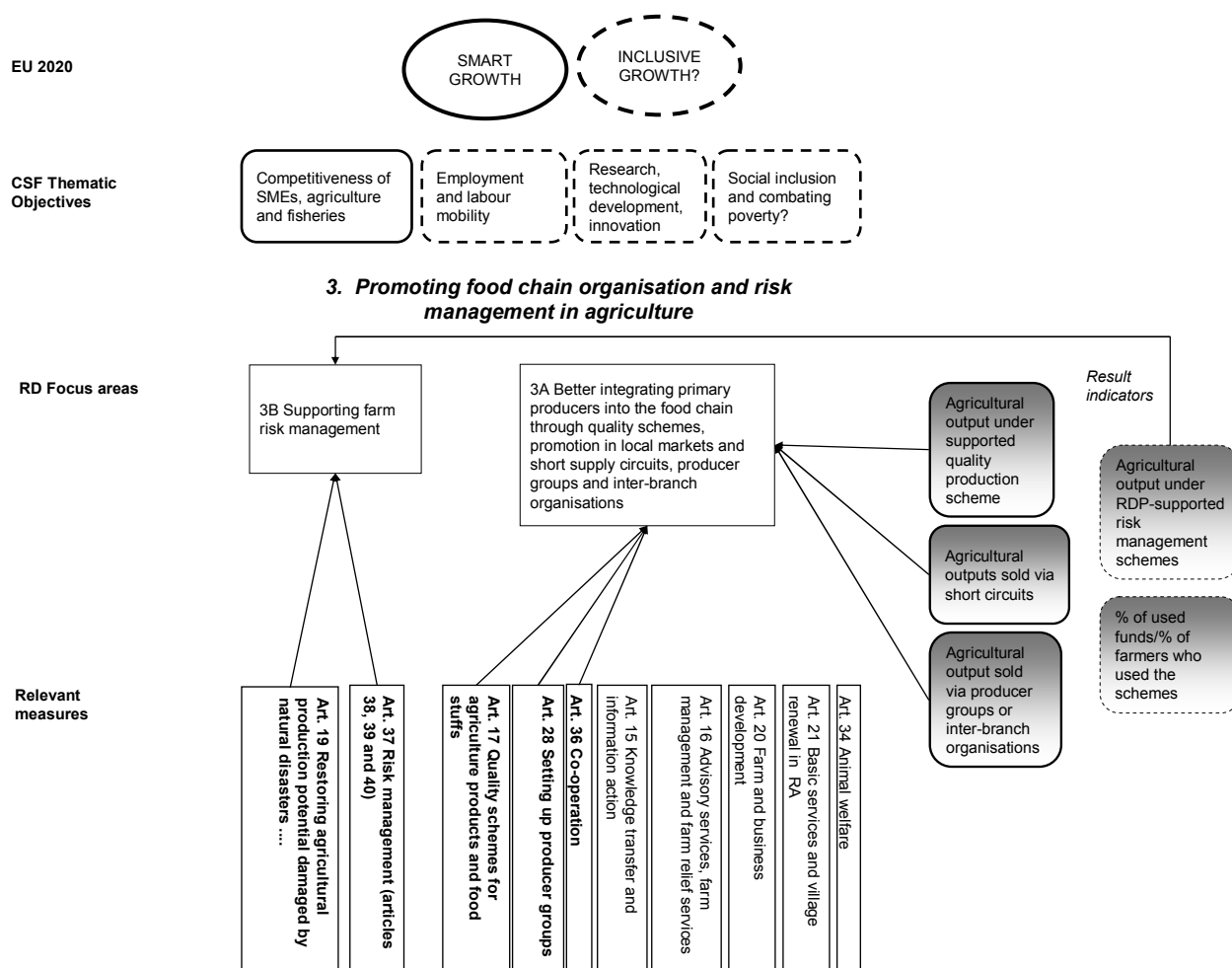
Remarks on result indicators for the priority:

The target indicator originally proposed for this priority has been augmented by a new one related to the new focus area of facilitating generational renewal. An additional/alternative result indicator 'changes in agricultural output of supported farms' is also proposed for consideration.

Remarks on measures:

For simplicity, measures which are specifically related to Priority 3: 'Promoting food chain organisation and risk management in agriculture ' such as Article 37 "Risk management' and Article 19 "Restoring agricultural production potential damaged by natural disasters and appropriate prevention actions' are not repeated here.

3.3. Priority 3: Promoting food chain organisation and risk management in agriculture



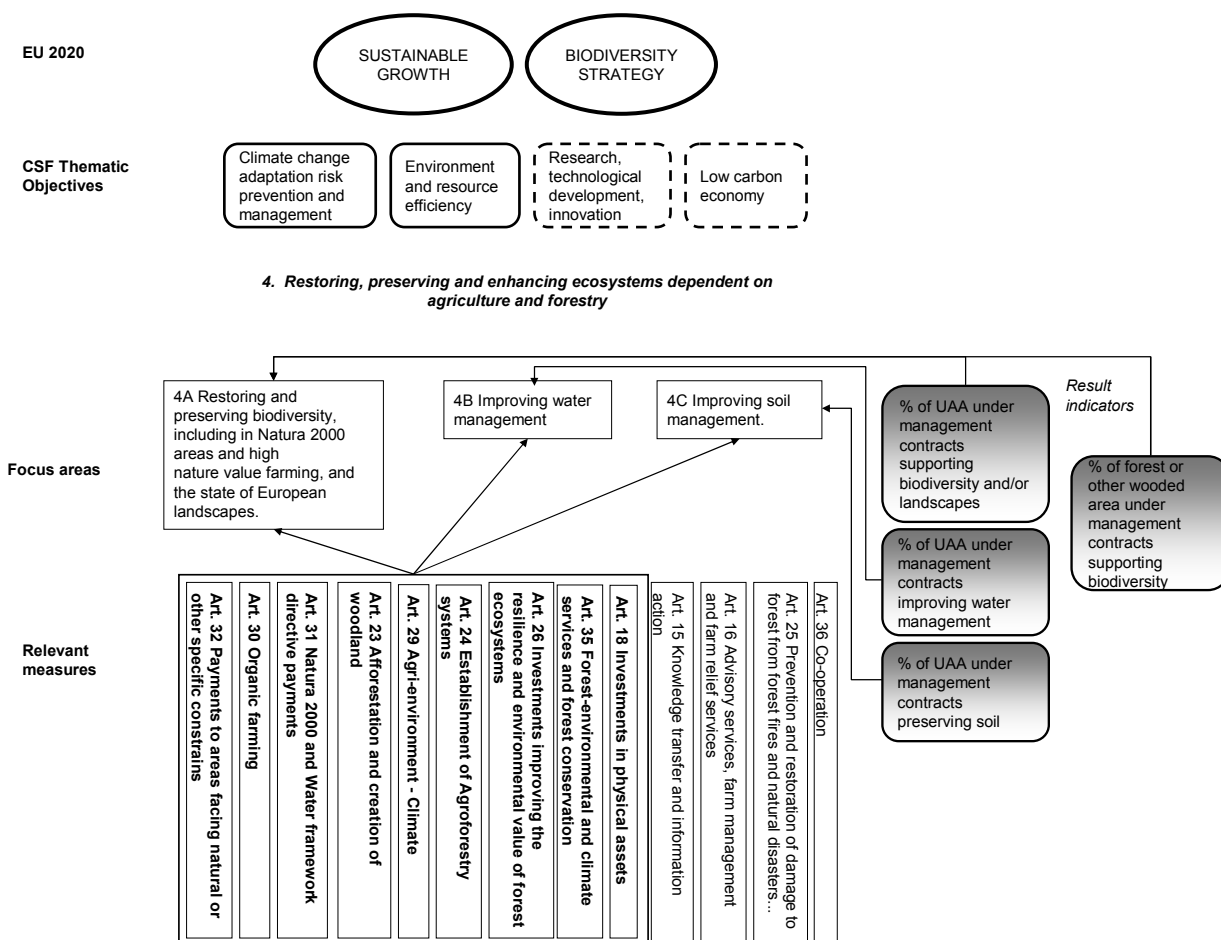
Links to EU 2020 objectives, CAP general objectives and CSF thematic objectives

- The main goal of this priority is identified as smart growth, with inclusive growth as a secondary objective, supported by the risk management tools (as for Priority 2, this could potentially be the subject of further discussions).
- It is related most closely to the first general CAP objective (competitiveness).

Remarks on measures

- Article 34 "Animal welfare" is placed as contributing to Priority 3, as suggested in Annex V of the draft legal proposals.
- Both Article 21 "Basic services and village renewal" and Article 20 "Farm and business development" are considered as potentially contributing to this priority where operations are related to food (e.g. small-scale village infrastructure to facilitate direct selling by farmers).

3.4. Priority 4: Restoring, preserving and enhancing ecosystems dependent on agriculture and forestry



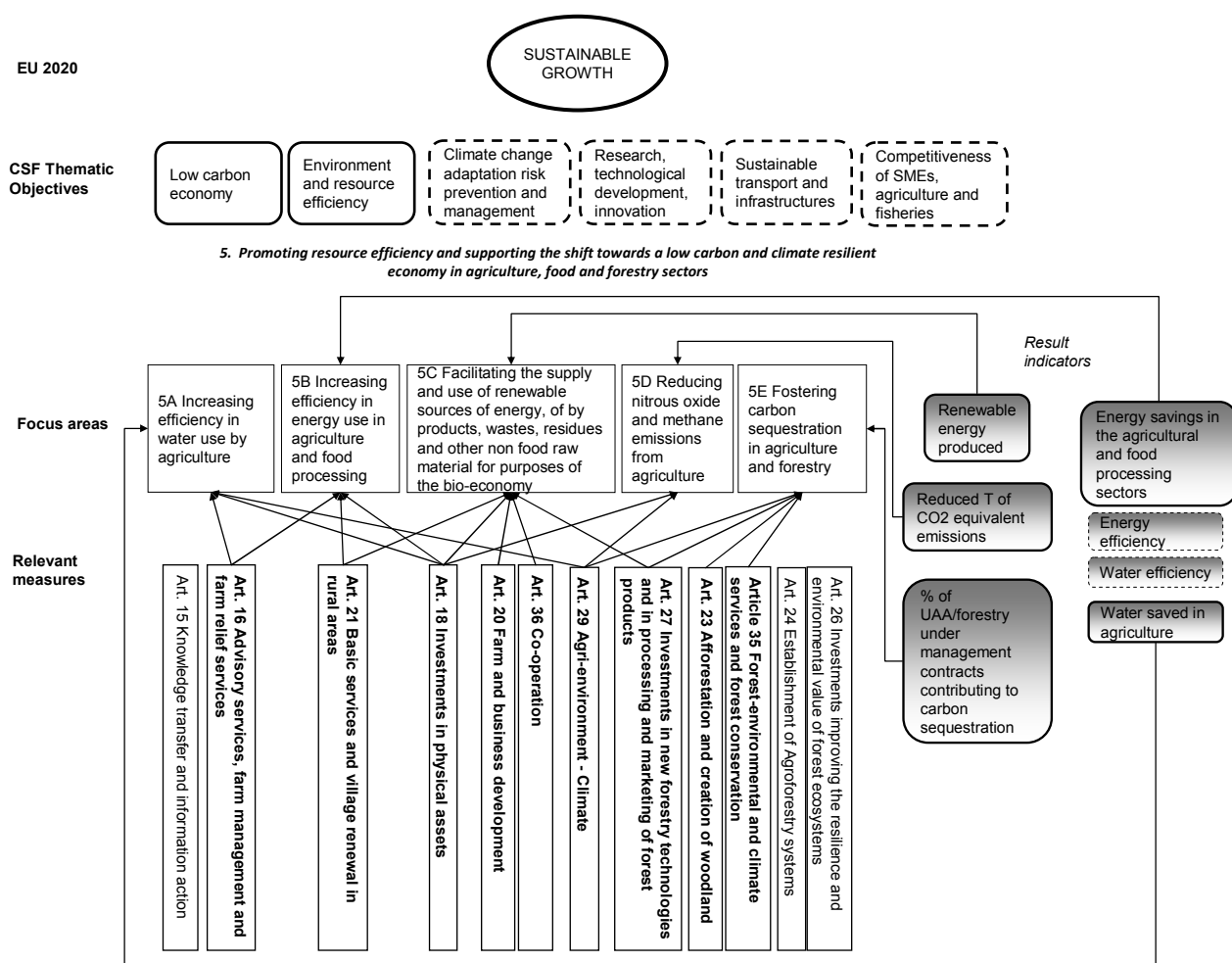
Links to EU 2020 objectives, CAP general objectives and CSF thematic objectives:

- This priority contributes principally to sustainable growth and the objectives of the biodiversity strategy. In relation to climate change, the focus of this priority would be adaptation.
- This priority is most specifically related to the second general CAP objective (sustainable management of resources and climate action).

Remarks on measures:

Article 18 "Investment in physical assets' is mentioned as it covers non-productive investments.

3.5. Priority 5: Promoting resource efficiency and supporting the shift towards a low carbon and climate resilient economy in agriculture, food and forestry sectors



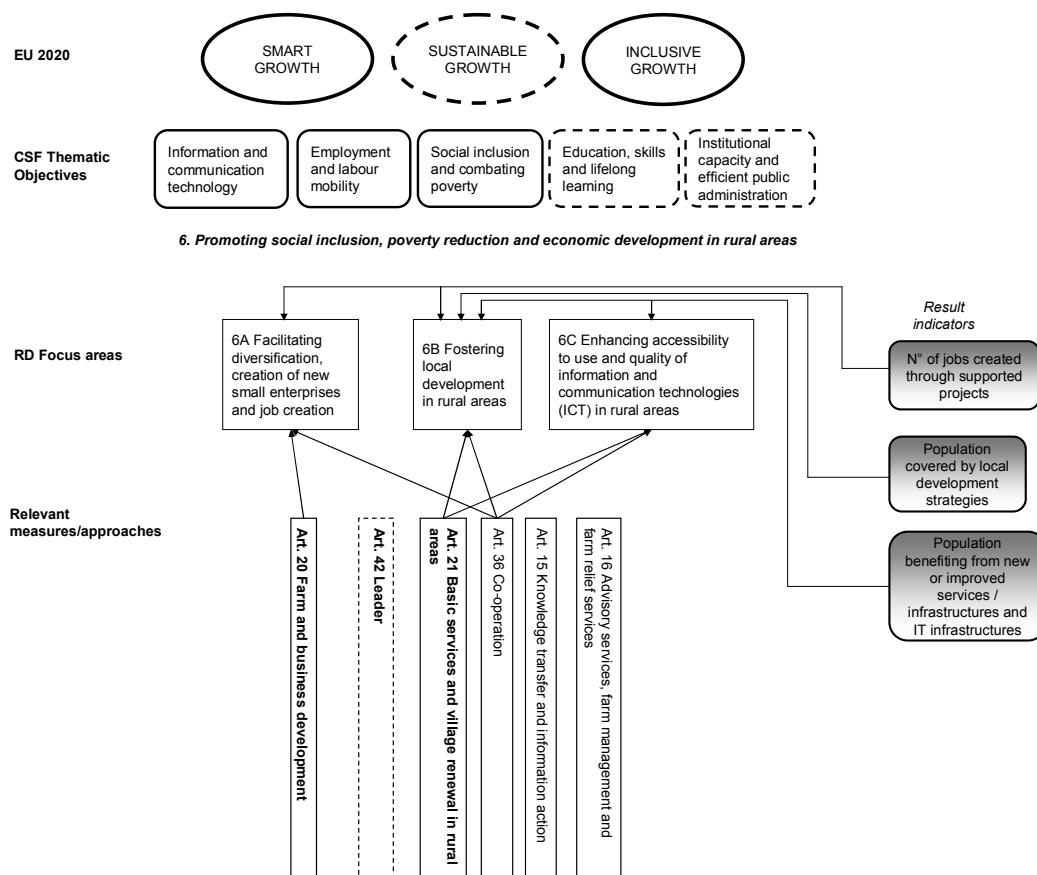
Links to EU 2020 objectives, CAP general objectives and CSF thematic objectives:

- The main goal of this priority is sustainable growth, through contributing to the 20/20/20 climate and energy targets. In relation to climate change, the focus of this priority would be mitigation.
- This priority is most specifically related to the second CAP general objective (sustainable management of resources and climate action).
- The CSF thematic objective 'climate change adaptation risk prevention and management' is considered as a subsidiary objective for this priority, important because of the shift to a climate resilient economy. Priority 4 is expected to make a greater contribution to this objective.

Remarks on result indicators for the priority:

More work is required to develop further the method proposed for calculation of the indicator 'reduced CO2 emissions'. Standard coefficients exist to estimate the CO2 equivalent saved from different types of activity, and these could be related to RDP operations. In particular, the relationship between focus areas 5D and 5E, and the associated indicators, requires further consideration.

3.6. Priority 6: Promoting social inclusion, poverty reduction and economic development in rural areas



Links to EU2020 objectives, CAP general objectives and CSF thematic objectives:

- This priority is related to all three EU2020 objectives
- It is most specifically related to the third general CAP objective (balanced territorial development)

Remarks on result indicators for the priority:

- Two separate indicators are proposed in relation to 'population benefiting from new or improved services / infrastructures': one related to focus area 6B 'fostering local development in rural areas' and one to 6C 'enhancing accessibility to, use and quality of information and communication technologies (ICT) in rural areas', since it is important to be able to distinguish between the two areas.
- The indicator 'Jobs created' could also cover both focus areas 6A 'facilitating diversification from the agricultural sector, creating new small enterprises and other forms of job creation' and 6B 'fostering local development in rural areas'.

Remarks on measures:

- Article 16 "Advisory services" is relevant because it is open to SMEs.
- Article 20 "Farm and business development" is relevant because it is related to start-ups.

4. Next steps / timetable

- Work is ongoing on the draft list of indicators, with the involvement of Member States and stakeholders at all stages of the exercise, particularly on:
 - Output and result indicators for rural development (refined definitions, methodologies, data collection systems, indicator plans, etc.);
 - Impact indicators, especially to identify those indicators that are best assessed at EU level, and those that require assessment at a lower territorial level, e.g. at RDP level.
- The results of the joint workshops on 14th/15th March are being used to refine and revise the original indicator proposals.
- The next meeting of the Evaluation Expert Committee on 12th June 2012 will address the revised proposals on impact and result indicators and the ex-ante evaluation of RDPs.
- The creation of a specific expert group for "Monitoring and evaluation of the CAP" is also envisaged in order to discuss the new framework as well as the related implementing and delegated acts.
- Tentatively, working documents setting out the draft framework for Monitoring and Evaluation for the CAP post-2013 will be provided in September / October 2012. Guidance documents covering specific aspects of the system, for example and the intervention logic, associated indicators and examples of how measures can be used in relation to the different priorities, ex-ante evaluation of RDPs, definition of indicators, data collection, and methodology for calculation of indicator values will be developed by the Commission to ensure a common understanding of the EAFRD framework, and that meaningful aggregation of monitoring data and evaluation results at EU level will be possible. (Draft implementing and delegated acts are foreseen by the end of 2012).

ANNEX I: KEY CONCEPTS FOR MONITORING AND EVALUATION

- Monitoring is a continuous and systematic process carried out throughout the duration of an intervention, which generates quantitative data on the implementation of the intervention, but not usually on its effects. The intention is to correct any deviation from the immediate aim of the action, and thus to improve the performance of the programme as well as facilitate subsequent evaluation.
- Evaluation judges interventions according to their results, impacts and the needs they aim to satisfy¹. Thus, in contrast to monitoring, evaluation is a process that culminates in a judgment or assessment of an intervention.
- Indicators are an important input into the monitoring and evaluation process. They are aggregates of raw and processed data that allow a quantification (and necessarily provide a simplification) of phenomena to help understand complex realities. Indicators normally include a value and a measurement unit. It needs to be underlined in this context that it is not the indicators as such but the *interpretation* of the indicators that allows drawing conclusions on the achievement of policy objectives.
- An intervention logic provides an evidence based, systematic and reasoned description of the links between individual actions/measures and the overall objectives of the intervention. Objectives can be presented in different levels in the form of a hierarchy or tree ("hierarchy of objectives"), thus showing the logical links between objectives and their sub-objectives.
- Context indicators provide information on relevant aspects of the general contextual trends that are likely to have an influence on the performance of the policy, e.g. GDP per capita, rate of unemployment.
- Output indicators measure activities directly realised within policy interventions as the first step towards realising the immediate aim of the intervention. They are measured in physical or monetary units e.g. number of farmers supported by young farmer scheme, number of farm holdings supported by investment measure.
- Result indicators measure the direct and immediate effects of the intervention providing information on changes in, for example, the behaviour, capacity or performance of direct beneficiaries. They are measured in physical or monetary terms e.g. share of direct payments in farm income, percentage of UAA under management contracts preserving soil.
- Impact indicators refer to the benefits of the intervention beyond the immediate effects on its direct beneficiaries and are normally expressed in net terms (i.e. subtracting effects that cannot be attributed to the intervention and taking into account indirect effects), e.g. total factor productivity in agriculture, rural employment rate compared to rest of economy. Impact indicators are linked to the wider overall objectives of the policy. As they are affected by a range of factors, it is not appropriate to establish specific targets for them. They are assessed as part of evaluation exercises, not as part of regular monitoring activity.
- Target indicators are a specificity of Rural Development Policy. They indicate what the programme aims to achieve and reflect the priorities for the programming area. They are established for each focus area, mostly at the level of result indicators.

¹ See Communication on Evaluation (SEC(2000) 1051)

ANNEX II: FIRST DRAFT OF CAP IMPACT INDICATORS (AS OF 09 MARCH 2012)

General objective	Indicator(s)
Viable food production	<p><i>Agricultural entrepreneurial income / AWU*</i></p> <p><i>Agricultural entrepreneurial income / AWU as % of wages and salaries / AWU in economy</i></p> <p><i>Total factor productivity (TFP) *</i></p> <p><i>Commodity (market) price volatility</i></p> <p><i>Consumer price volatility</i></p> <p><i>Production / consumption (commodities)</i></p> <p><i>Agricultural trade balance (overall)</i></p> <p><i>Share of food expenditure in total expenditure</i></p>
Sustainable management of natural resources and climate action	<p><i>Net GHG emissions from agriculture*; Share of agriculture in GHG emissions*</i></p> <p><i>Farmland bird population index*</i></p> <p><i>HNV indicator*</i></p> <p><i>Share of agriculture in water use*; Water use for irrigation*</i></p> <p><i>[Water quality indicator] *</i></p> <p><i>Soil quality index*</i></p> <p><i>Soil erosion indicator*</i></p>
Balanced territorial development	<p><i>Rural employment rate [compared to rest of economy] *</i></p> <p><i>Share of rural population living at risk of poverty [compared to rest of economy] *</i></p> <p><i>Rural GDP per capita in PPS [compared to rest of economy] *</i></p>

Note: To consider whether to include at impact level a horizontal indicator on research, for instance *Expenditure in agricultural research and development expressed as share of agricultural GDP**.

****impact indicators to which RD is mostly expected to contribute***

ANNEX III: FIRST DRAFT OF RD RESULT INDICATORS (AS OF 09 MARCH 2012)

Priority and focus area	Indicator(s)
<p>1. Fostering knowledge transfer and innovation in agriculture, forestry and rural areas</p> <p>1A Fostering innovation and the knowledge base in rural areas</p> <p>1B Strengthening the links between agricultural and forestry and research and innovation</p> <p>1C Fostering lifelong learning and vocational training in the agriculture and forestry sectors</p>	<p><i>N° of holdings introducing new technologies as a result of innovative approaches as identified by Member States.</i></p>
<p>2. Enhancing competitiveness of all types of agriculture and enhancing farm viability</p> <p>2A Facilitating restructuring of farms facing major structural problems, notably farms with a low degree of market participation, market-oriented farms in particular sectors and farms in need of agricultural diversification</p> <p>2B Facilitating generational renewal in the agricultural sector</p>	<p><i>% of agriculture holdings with RDP supported business development plan for young farmers*</i></p> <p><i>Changes in agricultural output of supported farms</i></p> <p><i>Changes in GVA/AWU on supported holdings*</i></p>
<p>3. Promoting food chain organisation and risk management in agriculture</p> <p>3A Better integrating primary producers into the food chain through quality schemes, promotion in local markets and short supply circuits, producer groups and inter-branch organisations</p> <p>3B Supporting farm risk management</p>	<p><i>Agricultural output under supported quality production scheme*</i></p> <p><i>Agricultural outputs sold via short circuits*</i></p> <p><i>Agricultural output sold via producer groups or inter-branch organisations*</i></p> <p><i>Agricultural output under RDP-supported risk management schemes</i></p> <p><i>% of used funds/% of farmers who used the schemes</i></p>
<p>4. Restoring, preserving and enhancing ecosystems dependent on agriculture and forestry</p> <p>4A Restoring and preserving biodiversity, including in Natura 2000 areas and high nature value farming, and the state of European landscapes</p> <p>4B Improving water management</p> <p>4C Improving soil management</p>	<p><i>% of UAA under management contracts supporting biodiversity and/or landscapes*</i></p> <p><i>% of UAA under management contracts improving water management*</i></p> <p><i>% of UAA under management contracts preserving soil*</i></p> <p><i>% of forest or other wooded area under management contracts supporting biodiversity*</i></p>
<p>5. Promoting resource efficiency and supporting the shift towards a low carbon and climate resilient economy in agriculture, food and forestry sectors</p> <p>5A Increasing efficiency in water use by agriculture</p> <p>5B Increasing efficiency in energy use in agriculture and food processing</p> <p>5C Facilitating the supply and use of renewable sources of energy, of by products, wastes, residues and other non food raw material for purposes of the bio-economy</p>	<p><i>Renewable energy produced*</i></p> <p><i>Reduced T of CO2 equivalent emissions*</i></p> <p><i>% of UAA/forestry under management contracts contributing to carbon sequestration*</i></p> <p><i>Energy savings in the agricultural and food processing sectors*</i></p>

<p>5D Reducing nitrous oxide and methane emissions from agriculture</p> <p>5E Fostering carbon sequestration in agriculture and forestry</p>	<p><i>Energy efficiency</i></p> <p><i>Water efficiency</i></p> <p><i>Water saved in agriculture*</i></p>
<p>6. Promoting social inclusion, poverty reduction and economic development in rural areas</p> <p>6A Facilitating diversification, creation of new small enterprises and job creation</p> <p>6B Fostering local development in rural areas</p> <p>6C Enhancing accessibility to, use and quality of information and communication technologies (ICT) in rural areas</p>	<p><i>N° of jobs created through supported projects*</i></p> <p><i>Population covered by local development strategies*</i></p> <p><i>Population benefiting from new or improved services / infrastructures and IT infrastructures*</i></p>

* target indicators

ANNEX IV: FIRST DRAFT OPERATION LEVEL DATA ITEMS, INCLUDING OUTPUT INDICATORS (AS OF 09 MARCH 2012)

In grey are actual output indicators which would be integrated in the indicator plan in the programmes.

The other data items would simply be information to be collected from the operation application forms, to allow meaningful breakdown of output indicators' values.

Common data items for all measures			
No.	Outputs/Data item	Example values	Likely info source
1	Measure code		Prefilled by MA on application form
2	Total public expenditure (€)		Application form
3	Operation type	See examples provided separately	MA/PA to code when processing application
4	Priority/ies to which operation contributes	Main priority/ies identified (2-6)	Either prefilled (e.g. for specific call for tender) or filled by MA/PA when processing application
5	Is operation linked to priority 1?	Y/N	Automatically filled: All operations under measures Knowledge transfer and innovation, Advisory services, and Cooperation are automatically considered as contributing to Priority 1.
6	1 st Focus area to which operation contributes	Is it always possible to identify just one? E.g. individual agri-env climate schemes can contribute to HNV, water and soil management	Either prefilled (e.g. for specific call for tender) or filled by MA/PA when processing application
9	Sub-programme concerned	0=none; 1= young farmers; 2= small farms; 3= mountain areas; 4= short supply chains	Either prefilled, or coded by MA/PA when processing application

Data items relevant for several measures			
No.	Data item	Relevant measures (examples)	Likely information source
10	Type of LFA area	all measures except knowledge transfer ... 0=none; 1= mountain; 2= other; 3= mixed;	Either IACS (area based measures) or application form (other measures)
11	Total expenditure (including Private) (€)	All with co-financed investments	Application form
12	Area (ha) ¹	Agri-env climate; Organic farming; LEADER	IACS/application form
13	Physical area supported (ha) ²	Agri-env climate;	IACS
14	Is area NATURA?	Area based measures	Application form (tick box)
15	Is operation for an organic farm?	All agricultural operations	Application form (tick box)
16	Is operation promoter young farmer?	All agricultural operations	Application form (tick box)
17	Gender of project promoter	<i>investment measures</i>	Application form
18	No. farmers participating in supported schemes	Mutual funds; Income stabilisation tool	Application form
19	No. farmers benefiting from payouts	Mutual funds; Income stabilisation tool	Application form

Additional output indicators for specific measures			
No.	Indicator	Measure	Likely information source
20	No. training days given	Knowledge transfer and information actions	Application form (checked by PA at operation completion/payment)
21	No. participants trained	Knowledge transfer and information actions	Application form (checked by PA at operation completion/payment)
22	No. advisory personnel trained	Advisory services	Application form (checked by PA at operation completion/payment)
23	Population supported by broadband internet	Basic services and village renewal	Application form
24	No. producers concerned	Setting up of producer groups	Application form
25	No. LU supported	Animal welfare	Application form (Animal register?)
26	No. partners in co-op operation	Co-operation; LEADER cooperation	Application form
27	No. different types of partner in the operation (EIP, public-private etc.)	Co-operation; LEADER cooperation	Application form
28	Population covered by LAG	LEADER	

¹ "Area" relates to the total area under each type of contract, i.e. a hectare subject to two separate agri-environment contracts is counted twice.

² "Physical area supported" is the actual area covered by contracts, i.e. each hectare is only counted once, regardless of how many separate contracts it may be subject to.

Examples for "operation type" codes

Article 16 (Advisory services, farm management and farm relief services)

- 1= Advice to farm holder
- 2= Advice to forest holder
- 3= Advice to rural SME
- 4 = New farm management/farm relief service set up
- 5= Training for advisory personnel

Article 18 (Investments in physical assets)

(examples given for agricultural operations, additional codes will be needed for other types of investments)

- 1= agricultural machinery
- 2= agricultural construction (including associated equipment)
- 3= agricultural land improvement
- 4= other agricultural

Article 29 (Agri-environment climate)

- 1= Agri-environment/climate individual
- 2=Agri-environment/climate collective
- 3=Genetic resources

Article 36 (Cooperation)

- 1= EIP
- 2= Other

LEADER Approach

- 1=LEADER running costs
- 2=LEADER animation
- 3=LEADER supported operation
- 4=LEADER cooperation inter-territorial
- 5=LEADER cooperation transnational
- 6=LEADER preparatory support

Outstanding issues/next steps:

It is proposed that operations supported by LAGs should use an equivalent indicator scheme to track their own operations (omitting the measure code), meaning that separate indicators (such as no. operations supported) would not be needed. The practical implementation of this requires further consideration.

There are still some issues to be addressed. For example, incorporating multi-annual measures (agri-environment-climate, LFA etc) to ensure that all funding is captured, but that area is not cumulated from year to year.

Indicators in relation to Technical Assistance and Networking activities also need to be considered.

Example data for an operation (showing relevant indicators only)

Example operation: Investment under Article 18, for construction and equipment for farm shop to sell home-produced dairy products on a conventional (i.e. non-organic) dairy farm. Operation promoter is a male farmer located in an LFA (non-mountain) area. There are 12 data items relevant for this type of operation (agricultural investment in physical assets), as follows. These would be collected from the application form, either as prefilled information (e.g. items 1 and 4), tick boxes (e.g. items 10, 15, 16), or information completed by the beneficiary (e.g. items 2 and 11), or coded on initial receipt by paying agency/managing authority (e.g. item 5):

No.	Indicator	Example values
1	Measure code	18
2	Total public expenditure (€)	€125,000
3	Operation type	2 = agricultural construction (including associated equipment)
4	Priority to which operation contributes	2
5	Is operation linked to priority 1?	N
6	1 st Focus area to which operation contributes	2A
9	Sub-programme concerned	4= short supply chains
10	Type of LFA area	2= other
11	Total expenditure (including private)	€250,000
15	Is operation for an organic farm?	N
16	Is operation promoter a young farmer?	N
17	Gender of operation promoter	M